

ORDER
SCHULTZ FIRE AREA RESTRICTIONS
COCONINO NATIONAL FOREST-FLAGSTAFF RANGER DISTRICT

Pursuant to 16 USC § 551 and Title 36 CFR §261.50 (a) and (b), the following acts are prohibited on all National Forest System lands within the Coconino National Forest, in Coconino County in the State of Arizona. The restricted area is depicted on the attached map, hereby incorporated into this Order as Exhibit A.

PROHIBITIONS:

1. Possessing or using any type of motorized vehicle off National Forest System Roads; **36 CFR § 261.56**
2. Going into or being upon any area which is posted closed; **36 CFR § 261.53(e)**
3. Being on any road posted closed; **36 CFR § 261.54(e)**
4. Being on any trail posted closed; **36 CFR § 261.55(a)**

EXEMPTIONS:

Pursuant to 36 CFR 261.50 (e) the following persons are exempt from this order:

1. Person(s) with a Forest Service permit specifically authorizing the prohibited act or omission.
2. Any Federal, State or Local officer or member of an organized firefighting force in the performance of an official duty.
3. Over the snow vehicles.

AREA DESCRIPTION:

The order applies to National Forest System lands, roads, and trails within the vicinity of the San Francisco Peaks and Mt. Elden / Dry Lake Hills. Beginning at Shultz Tank, the closure boundary is Weatherford Trail north to the Kachina Peaks Wilderness boundary. The area closure includes forest land east of the Kachina Peaks Wilderness boundary and north to the Inner Basin Trail. The closure boundary continues south and west along the Inner Basin Trail. The closure continues along Inner Basin Trail to the junction of Forest System Road 552 at Lockett Meadow. The closure continues along Forest System Road 552 to US Highway 89. The closure boundary continues south on US Highway 89 to the junction of Lenox Park and includes all forest land to the west of the highway. The closure boundary proceeds south of Lenox Park along the underground telephone line to private land. The closure area includes all forest land west of the underground telephone line. From the junction of the underground telephone line and the private land, the closure boundary continues west along the forest boundary and then south to FR 6064D (Campbell road). The closure boundary continues west along FR 6064D to the powerline. The closure boundary continues south along the powerline to the road gate on FR 556 (Elden Springs road). The area closure includes forest land west of the powerline. The closure boundary continues west on FR 556 to FR 9180. The closure boundary continues on FR 9180 to FR 9139 to the junction of Little Elden Trail. The closure boundary continues south on Little Elden Trail to the junction of Heart Trail. The closure boundary continues along the Heart Trail to the junction of Sunset Trail. The closure area continues along Sunset Trail to Schultz Tank. The closure area includes forest land east and north of Heart Trail and Sunset Trail.

PURPOSE:

The purpose of this order is to provide for public health and safety and to protect resources.

IMPLEMENTATION:

1. This Order will be in effect when signed and shall remain in effect until September 22, 2013
2. This Order supersedes any previous order for the same area.

Done at Flagstaff, Arizona this 22nd day of September

/s/ Kristin M. Bail
KRISTIN M. BAIL
Acting Forest Supervisor
Coconino National Forest

Violation of this regulation is punishable as a Class B misdemeanor, by a fine of not more than \$5,000.00 for individuals and \$10,000.00 for organizations, or imprisonment for not more than six (6) months or both; 16 USC §551, and Title 18 USC §§ 3559 and 3571.

Schultz Fire Area Restrictions

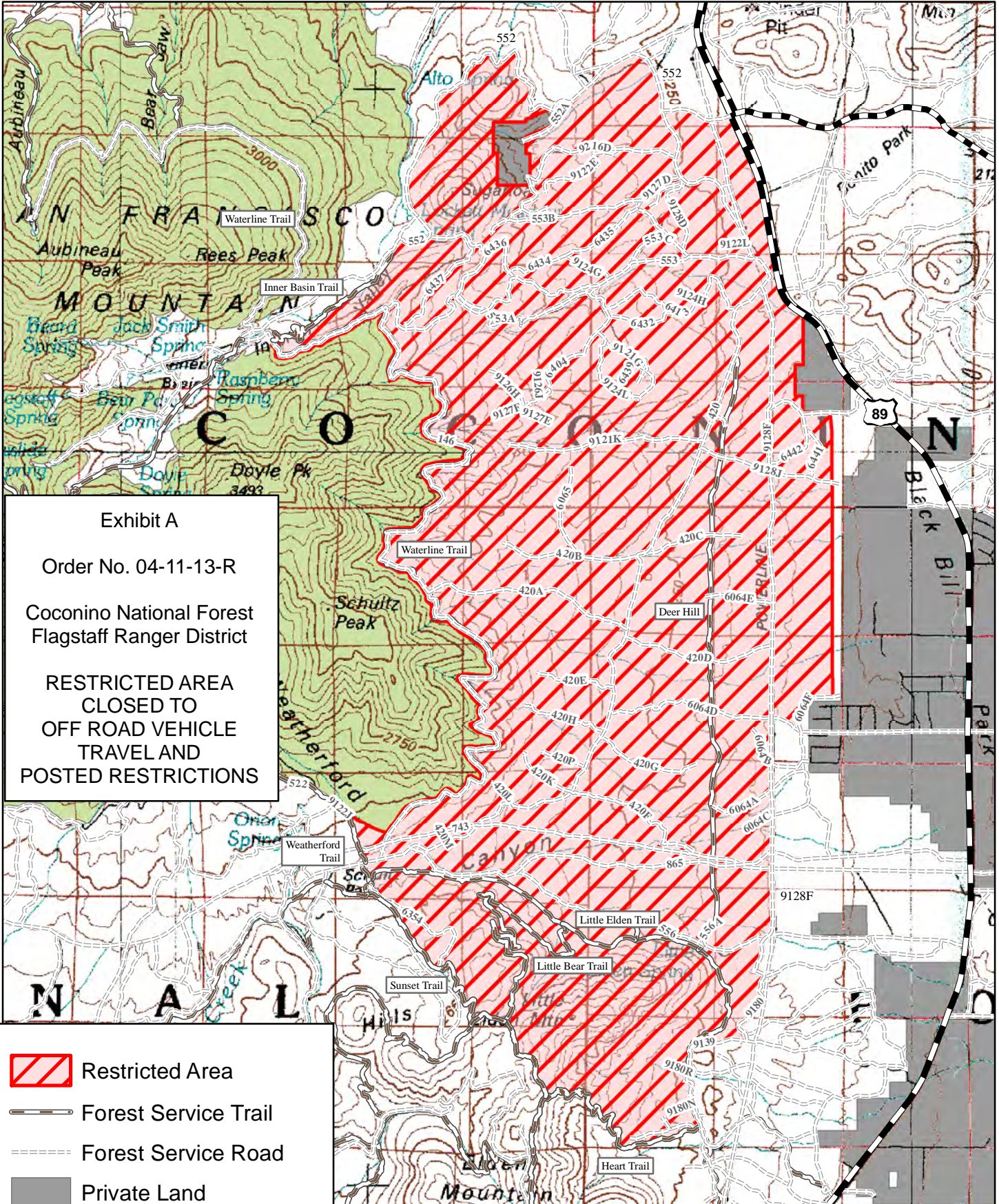



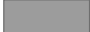



Exhibit A
Order No. 04-11-13-R
Coconino National Forest
Flagstaff Ranger District
**RESTRICTED AREA
CLOSED TO
OFF ROAD VEHICLE
TRAVEL AND
POSTED RESTRICTIONS**

-  Restricted Area
-  Forest Service Trail
-  Forest Service Road
-  Private Land
-  Wilderness

